

Features and Benefits

- Tone-on-tone logos created with a single color.
- Alternating cut and loop pile construction.
- Sewn edges for a luxurious, finished look.
- Extremely plush carpet.
- Bleach and UV resistant.
- Easy to clean! Simply vacuum.

Mat Specifications

Overall Mat Thickness: 1/2"

Mat Surface: Solution Dyed Nylon Yarn

Carpet Weight: 42 oz/sq yd

Static Dissipative

Mat Borders: Sewn Nylon or Vinyl

Mat Backing: Recycled Rubber or Vinyl

Standard Sizes

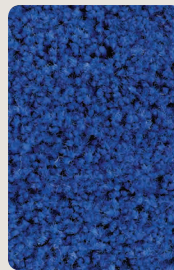
Size	Finished Size	Maximum Print Area	Weight
2' x 3'	24" x 35"	22" x 33"	6 lbs.
3' x 4'	35" x 47"	33" x 45"	11 lbs.
3' x 5'	35" x 59"	33" x 57"	13 lbs.
3' x 10'	35" x 118"	33" x 116"	27 lbs.
4' x 6'	45" x 69"	43" x 67"	20 lbs.
4' x 8'	45" x 95"	43" x 93"	27 lbs.
5' x 8'	58" x 95"	56" x 93"	36 lbs.
5' x 10'	58" x 119"	56" x 117"	45 lbs.
6' x 10'	68" x 119"	66" x 117"	52 lbs.
6' x 12'	68" x 143"	66" x 141"	63 lbs.

Special sizes are available.

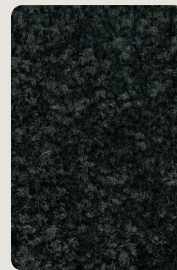
All mats have a 3-5% size variance.

Different designs, sizes and products cannot be combined for higher quantity break pricing.

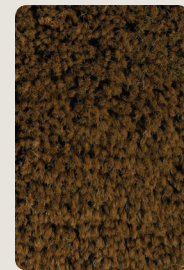
Color Options



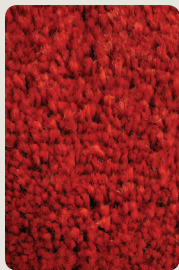
Bay Blue



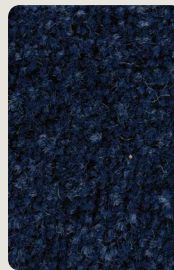
Black



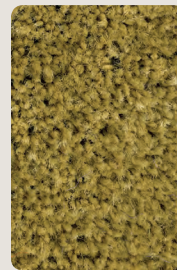
Brown



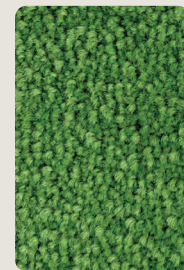
Clear Red



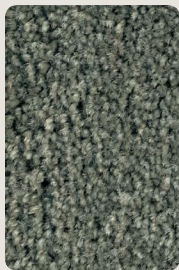
Deeper Navy



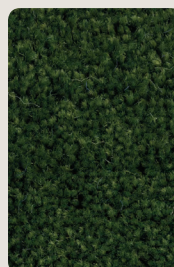
Golden Tan



Grass Green



Grey Metal



Olive Green



Wine